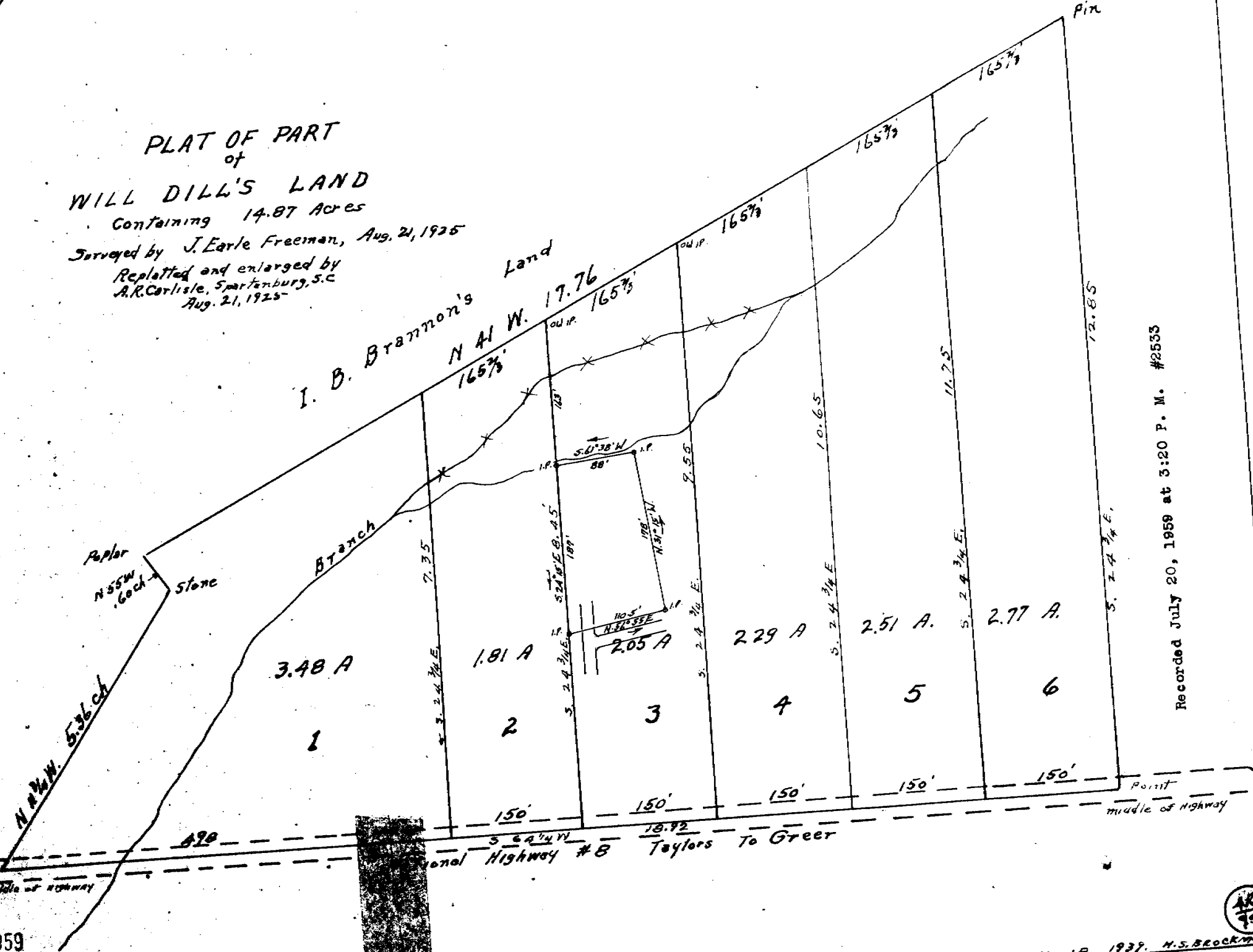


PLAT OF PART
of
WILL DILL'S LAND

Containing 14.87 Acres
Surveyed by J. Earle Freeman, Aug. 21, 1925
Replatted and enlarged by
A.R. Carlisle, Spartanburg, S.C.
Aug. 21, 1925

I. B. Brannon's Land
N 41 W. 17.76

Scale
1" = 100'
1" = 1 1/2 Chans



Recorded July 20, 1959 at 3:20 P. M. #2553

JUL 20 1959

RETRACED JULY 18 1939. H.S. BROCKMAN

